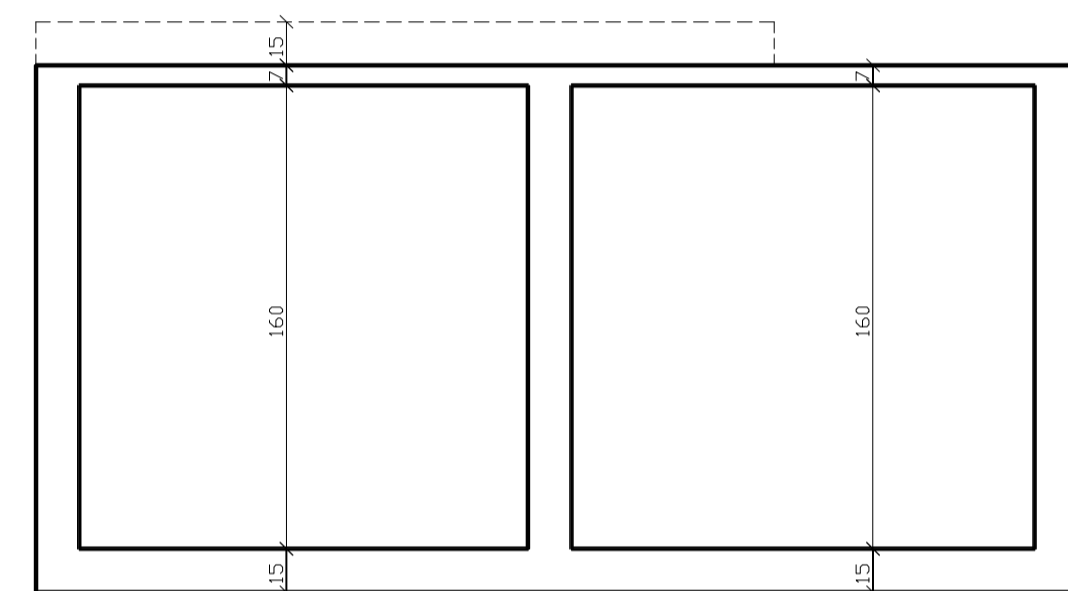
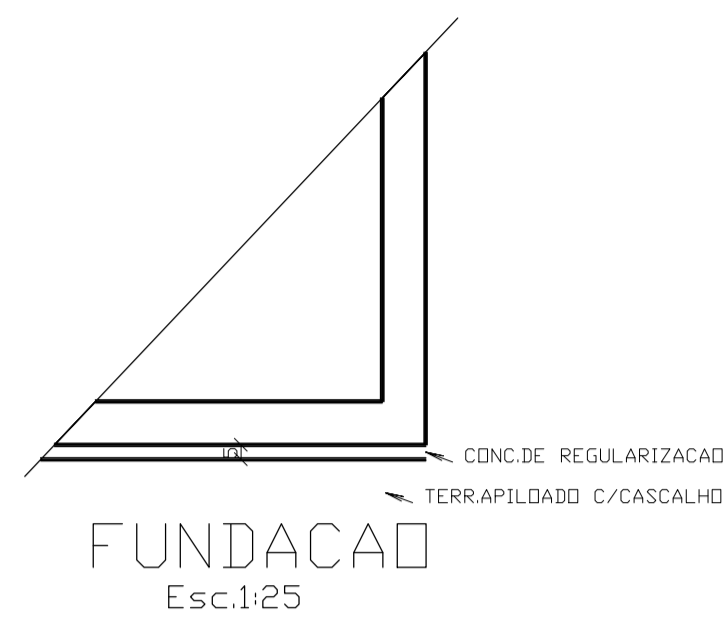
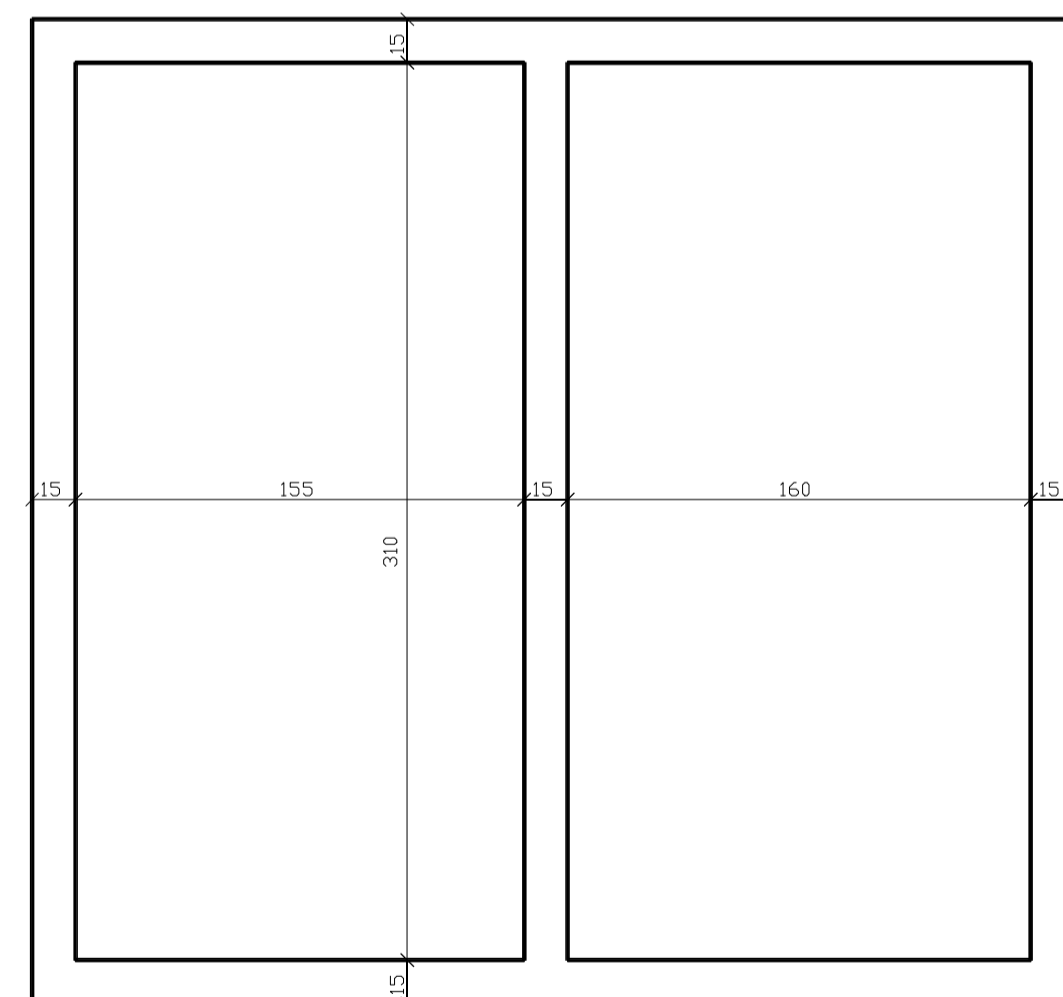


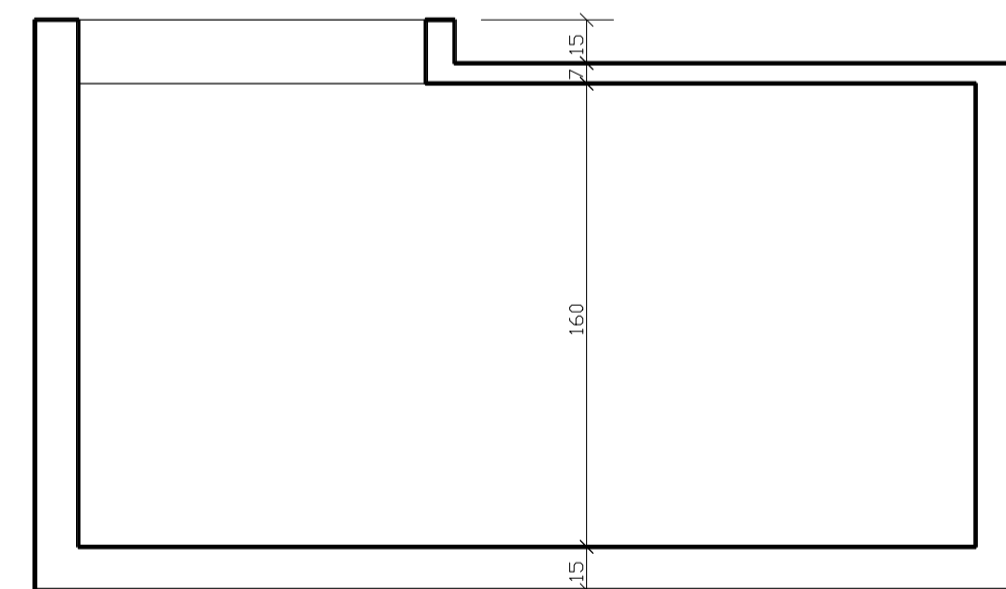
RESERVATÓRIO INFERIOR  
VOLUME TOTAL= 15.000L  
PLANTA BAIXA  
Esc.1:25



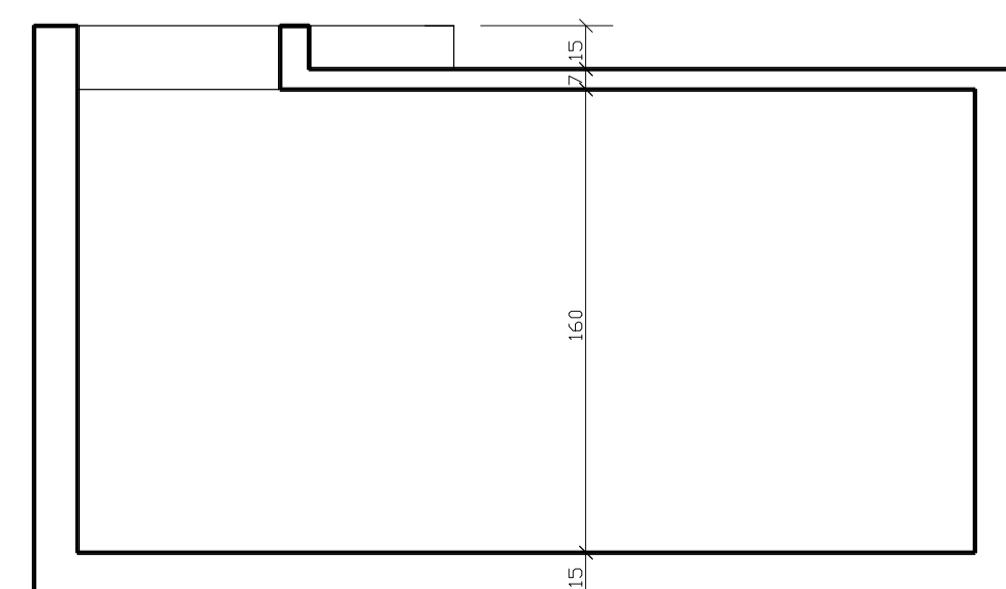
CORTE A-A  
Esc.1:25



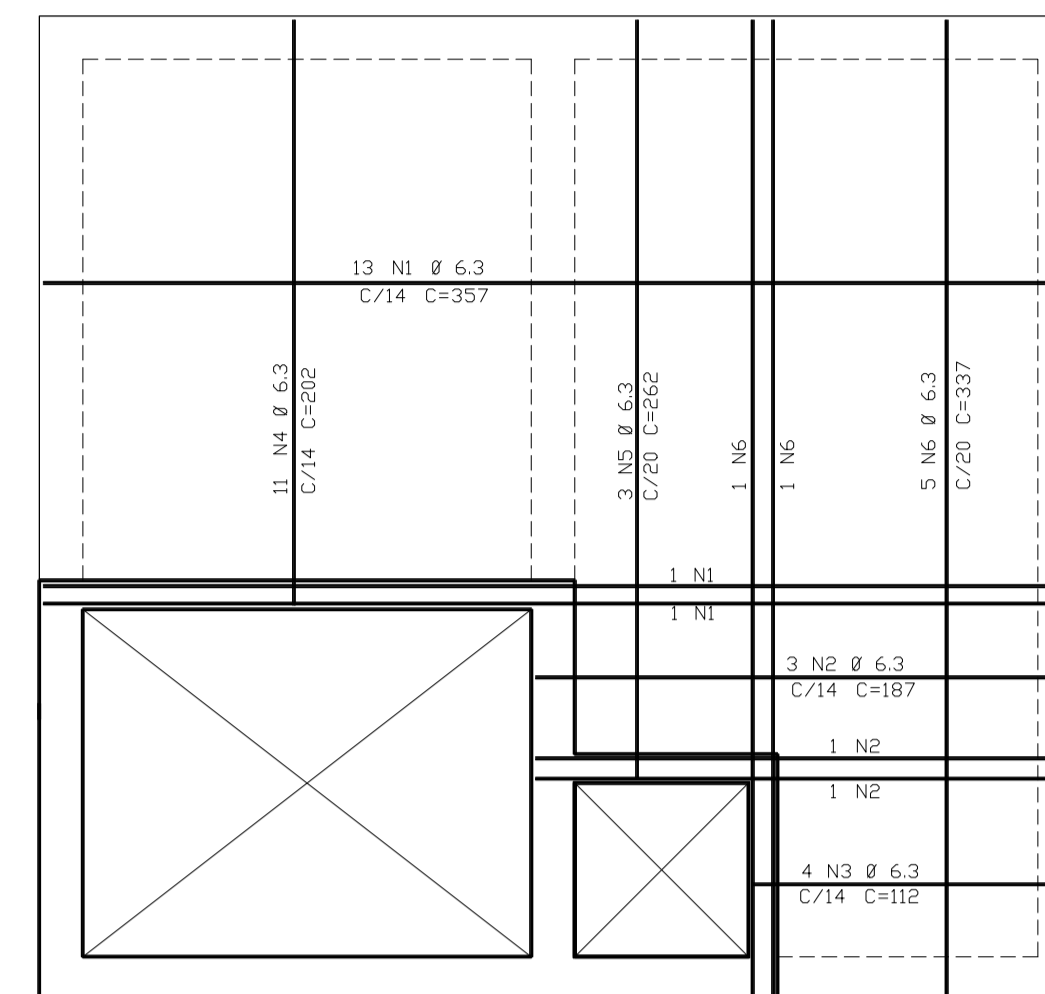
PAREDES  
Esc.1:25



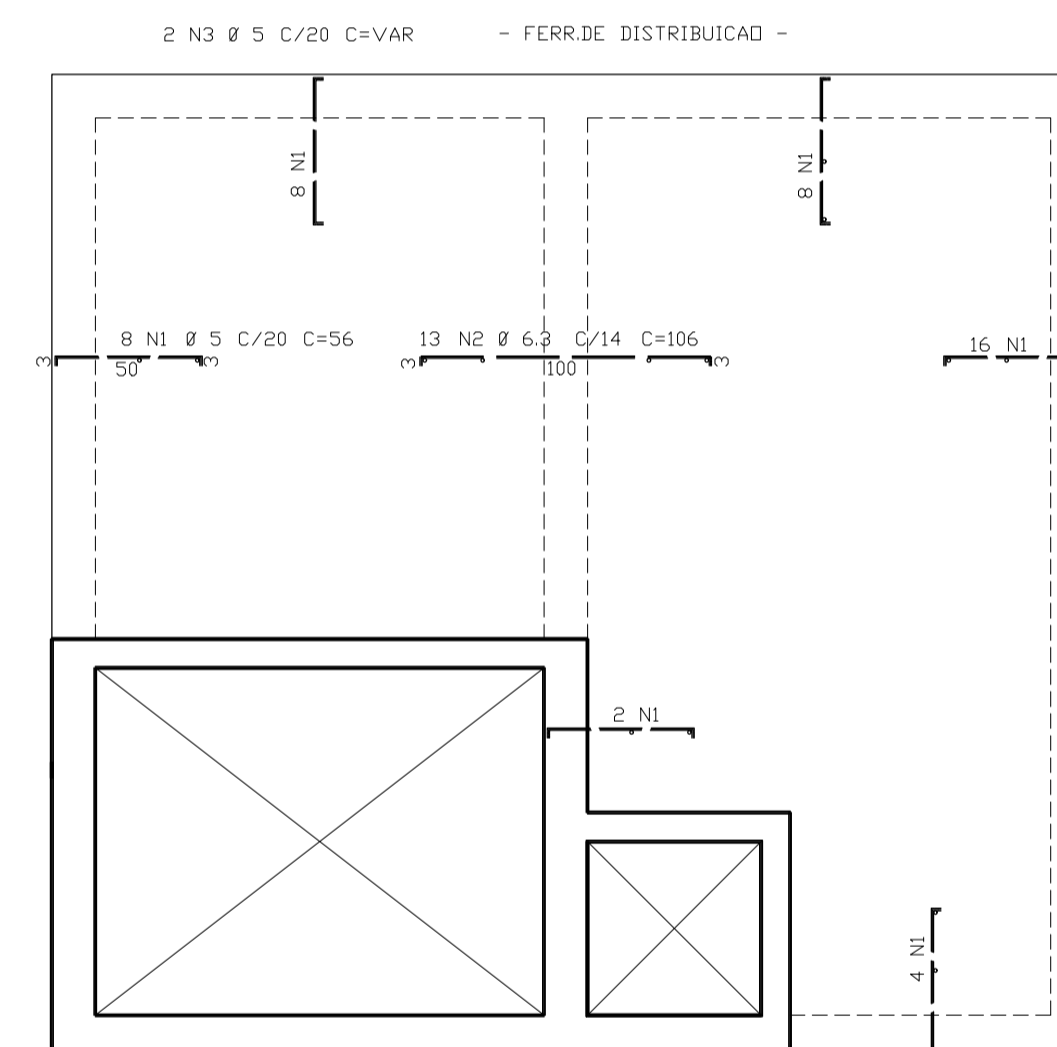
CORTE B-B  
Esc.1:25



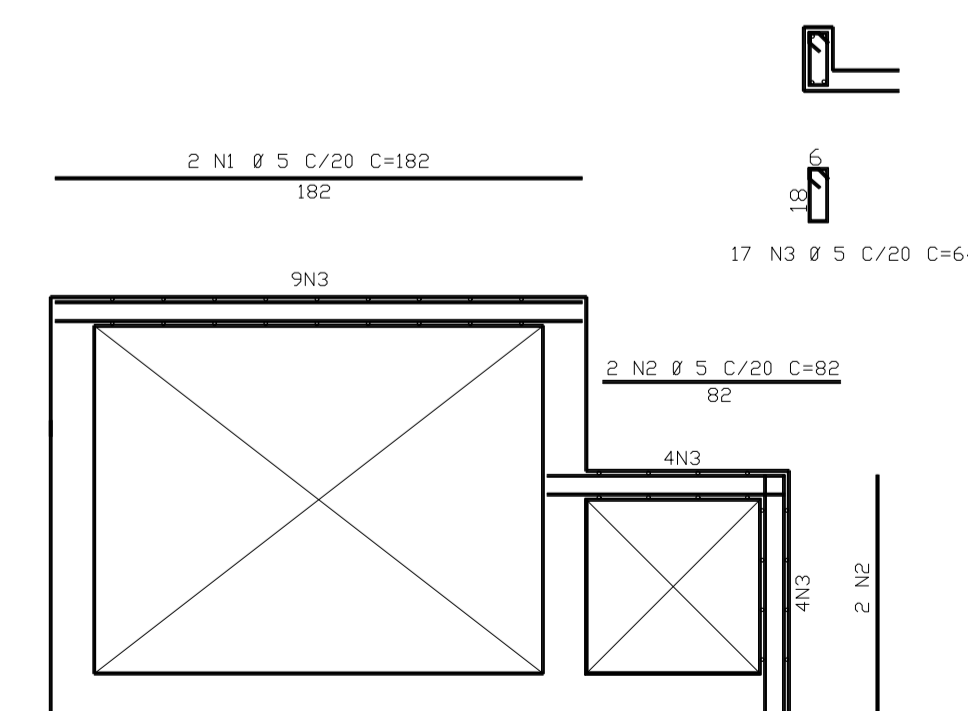
CORTE C-C  
Esc.1:25



TAMPA +  
Esc.1:25



TAMPA -  
Esc.1:25



VISITA  
Esc.1:25

ACD	POS	BIT (mm)	QUANT	COMPRIMENTO UNIT (cm)	TOTAL (cm)
TAMPA -					
60B	1	5	46	56	2576
50A	2	6.3	13	106	1378
60B	3	5	2	--VAR--	2720
TAMPA +					
50A	1	6.3	15	357	5355
50A	2	6.3	5	187	935
50A	3	6.3	4	112	448
50A	4	6.3	11	202	2222
50A	5	6.3	3	262	786
50A	6	6.3	7	337	2359
VISITA					
60B	1	5	2	182	364
60B	2	5	4	32	328
60B	3	5	17	64	1088

RESUMO		ACD	CA	50-60	PESD
ACD	BIT (mm)	COMPR (cm)		(kg)	
60B	5	71		11	
50A	6.3	135		34	
Peso Total		60B =		11 kg	
Peso Total		50A =		34 kg	

PROJETO PADRÃO - FNDE

MUNICÍPIO - UF: \_\_\_\_\_  
 PROPRIETÁRIO: \_\_\_\_\_  
 ENDEREÇO: \_\_\_\_\_  
 PROPRIETÁRIO: \_\_\_\_\_  
 RESP. TÉCNICO: Eng. Civil Roger Pacheco Piággio Couto - CREA-GO 2001/D  
 Eng. Civil Pedro Augusto de Alencar Neto - CREA-GO 2959/D  
 Eng. Civil Natan Aron Birenbaum - CREA: 46081-DRJ - REVISOR  
 AUTOR DO PROJETO: \_\_\_\_\_

DLFO: \_\_\_\_\_ CREA: \_\_\_\_\_  
 RA: \_\_\_\_\_

OBSERVAÇÕES: \_\_\_\_\_

ESCOLA 12 SALAS DE AULA  
PROJETO HIDROSSANITÁRIO

COORDENAÇÃO CGEST - Coordenação Geral de Infraestrutura Educacional	RESERVATÓRIO ENTERRADO DE 15.000L FORMAS, CORTES, FUNDAÇÃO, ARMAÇÃO DA TAMPA E VISITA	HID
REVISÃO R.03	ESCALA INDICADA DATA EMISSÃO MAIO/2014	PRANCHA 11/14
FORMATO A1 (841x594)		