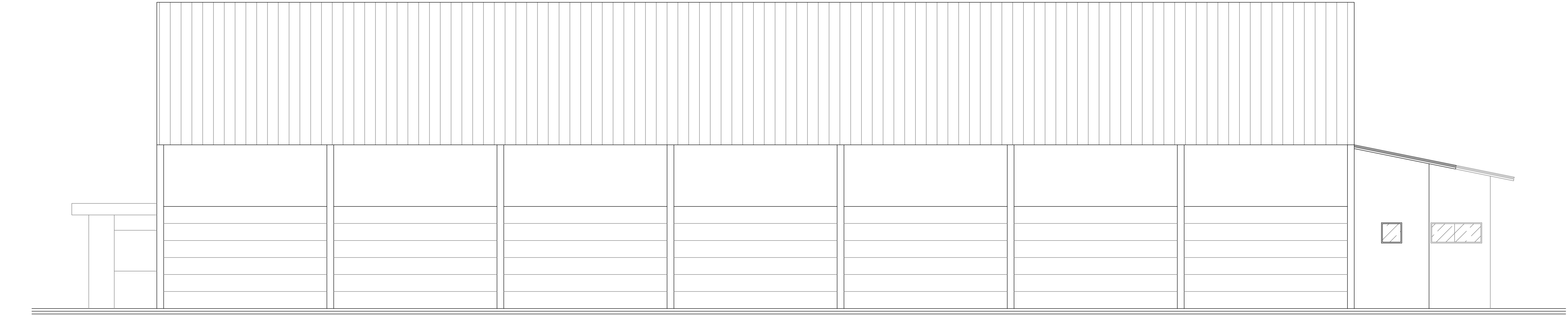
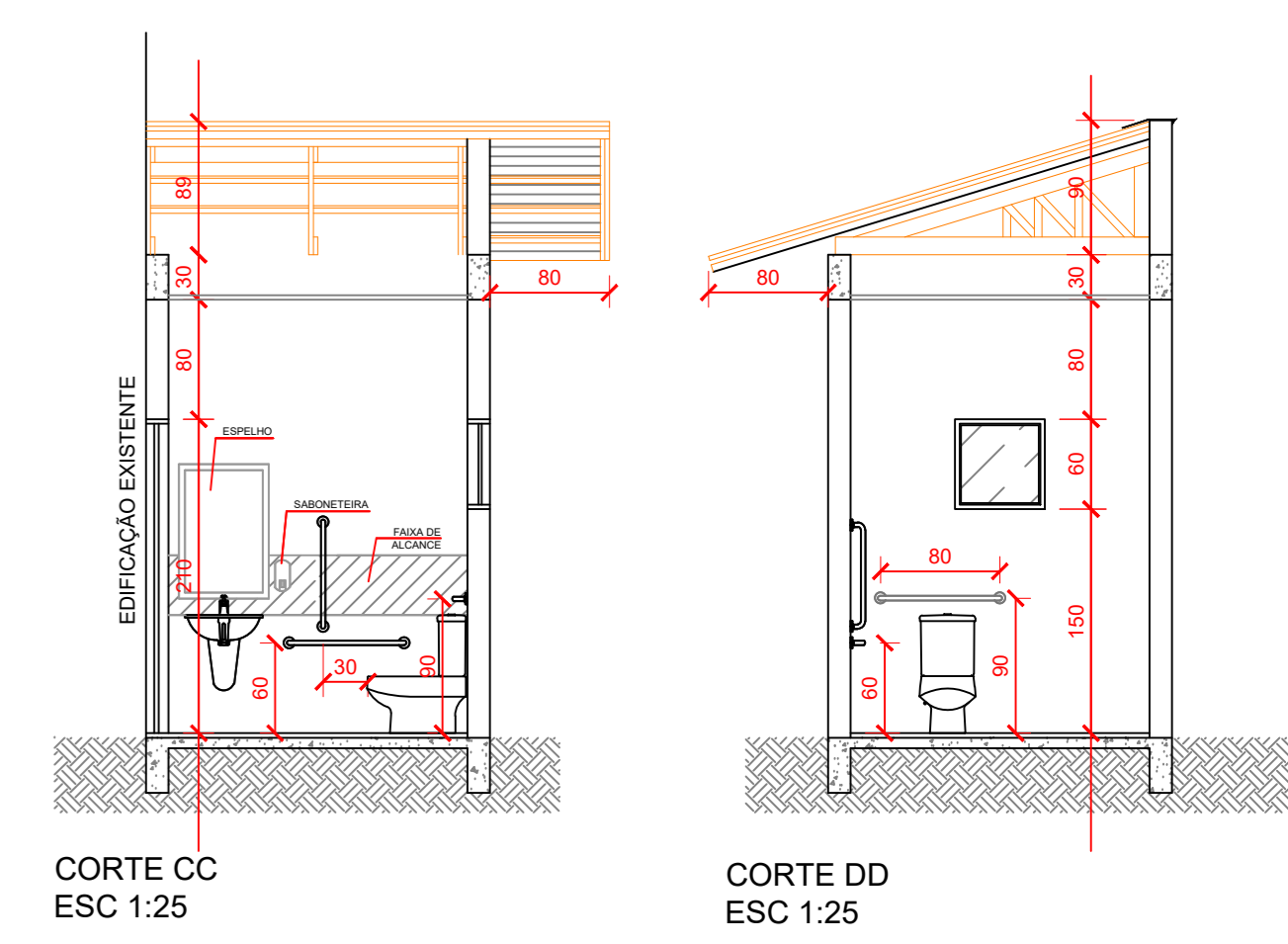
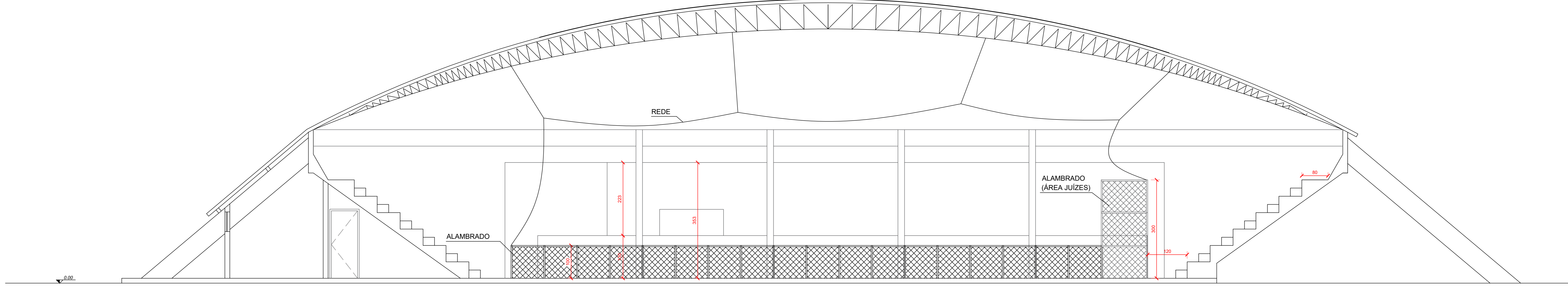


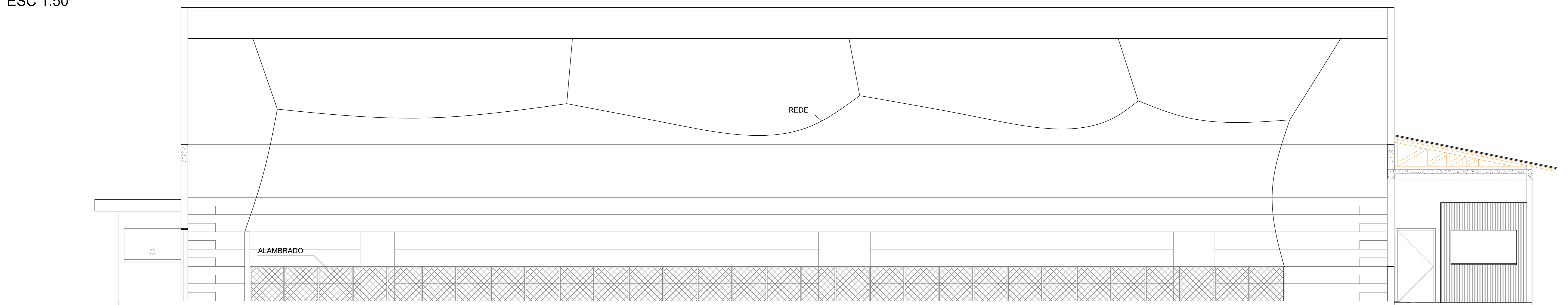
FACHADA FRONTAL
ESC 1:50



FACHADA LATERAL
ESC 1:50



CORTE AA
ESC 1:50



CORTE BB
ESC 1:50

AMURES		ASSOCIAÇÃO DE MUNICÍPIOS DA REGIÃO SERRANA
PREFEITURA MUNICIPAL DE URUBICI - SC		03
ASSESSORIA TÉCNICA		OBRA :
PROJETO: James André Clauberg Eng. Civil - CREA 46.196-6		REFORMA GINÁSIO DE ESPORTES NOÉ DA COSTA RIBEIRO
PREFEITO: Mariza Costa		FACHADAS CORTES DETALHE
DESENHO: Mariane de Moraes Mota		Localização: AV. Adolfo Konder, Centro - Urubici - SC
Escala:		DATA:
Indicada		07/2021